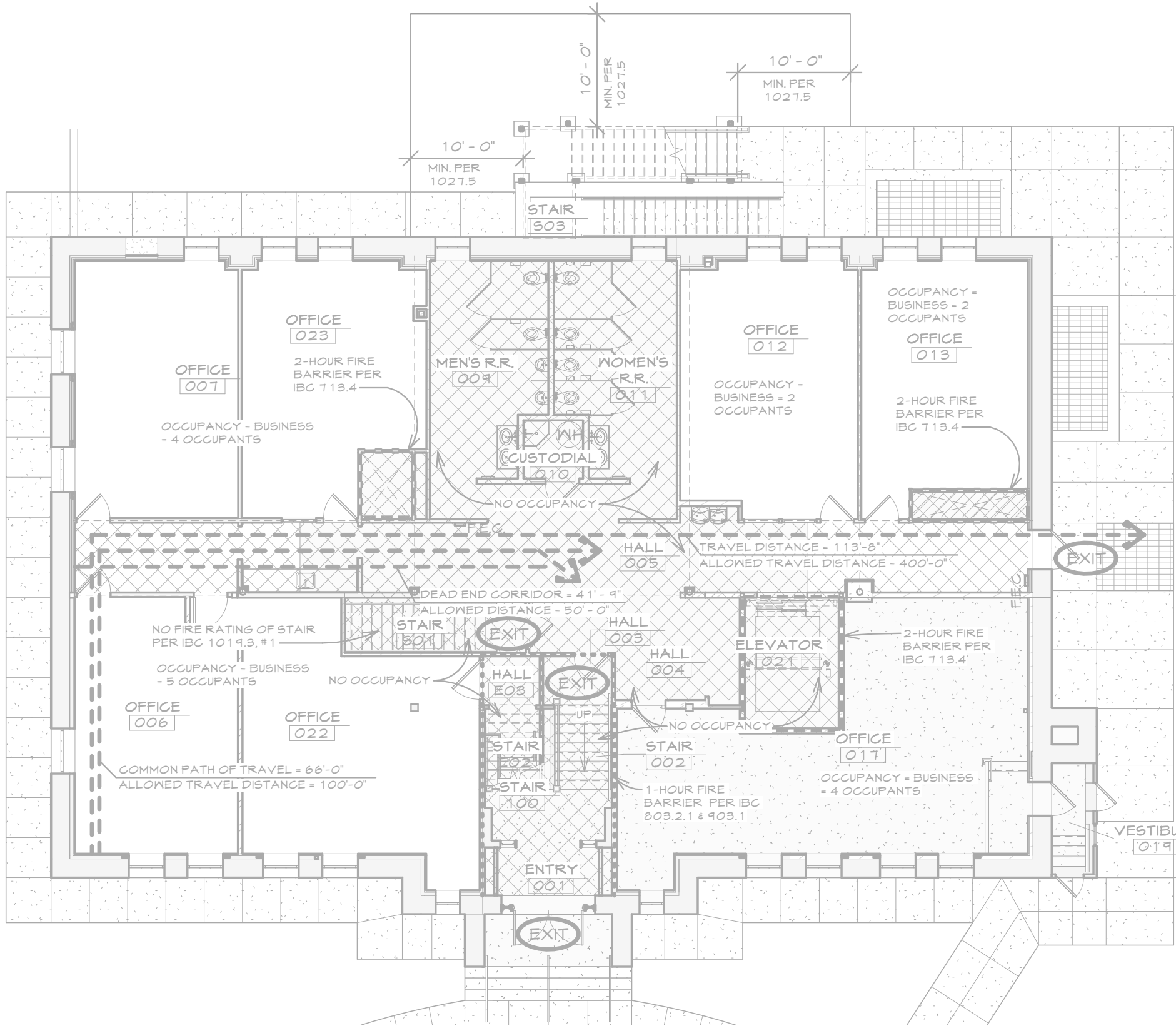
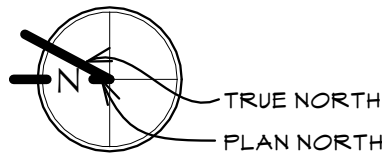


2015 IEBC CODE - SUB-BASEMENT

OCCUPANCY: B (BUSINESS)
TOTAL OCCUPANT LOAD OF FLOOR: 15 OCCUPANTS
TOTAL EGRESS WIDTH REQUIRED (SPRINKLERED) - 4'
- 5'4" PROVIDED AT RECONSTRUCTED INTERIOR STAIR
- 4'2" PROVIDED AT NEW EXTERIOR EXIT STAIR
TWO EXITS REQUIRED DUE TO MAXIMUM COMMON PATH OF TRAVEL

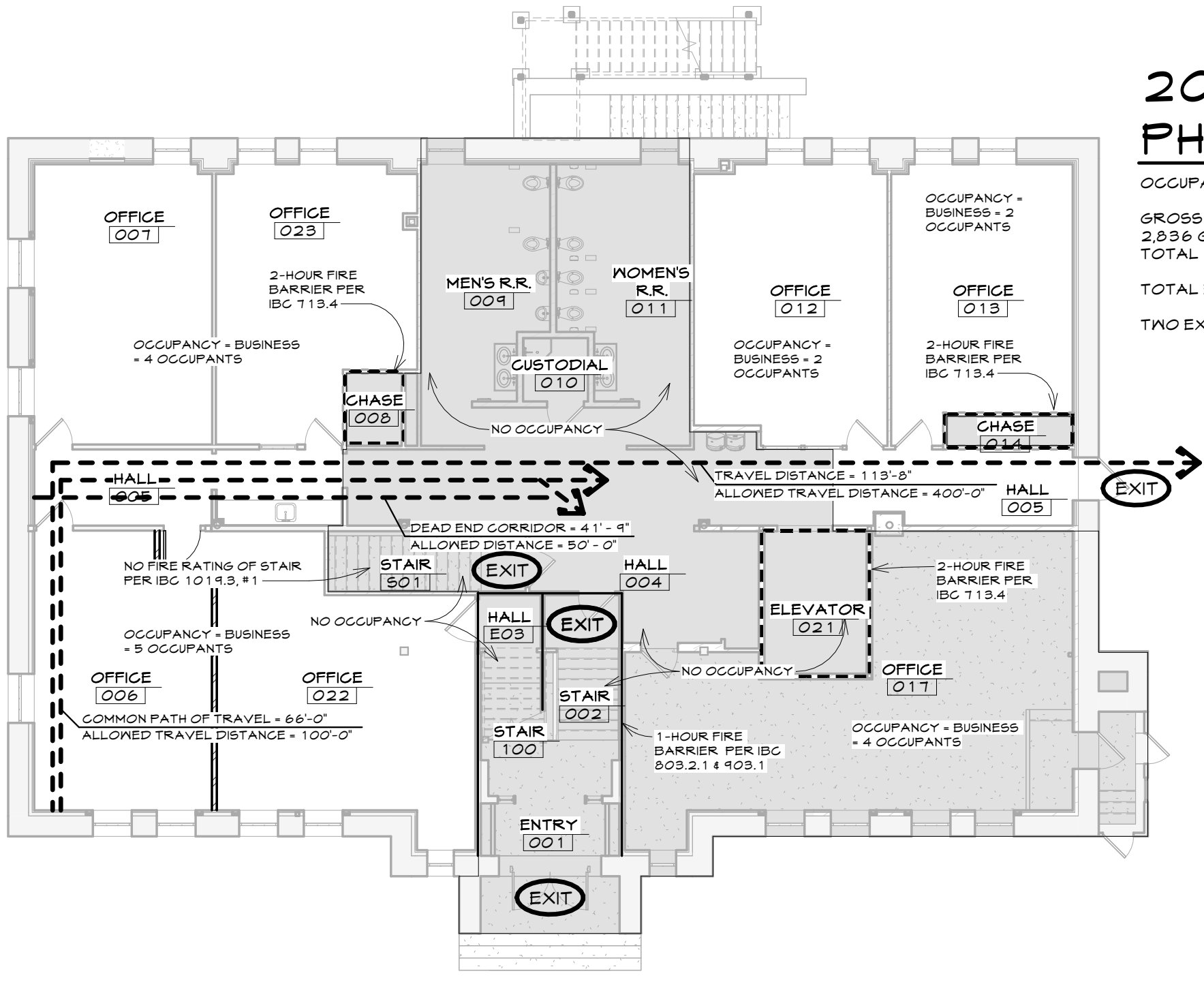
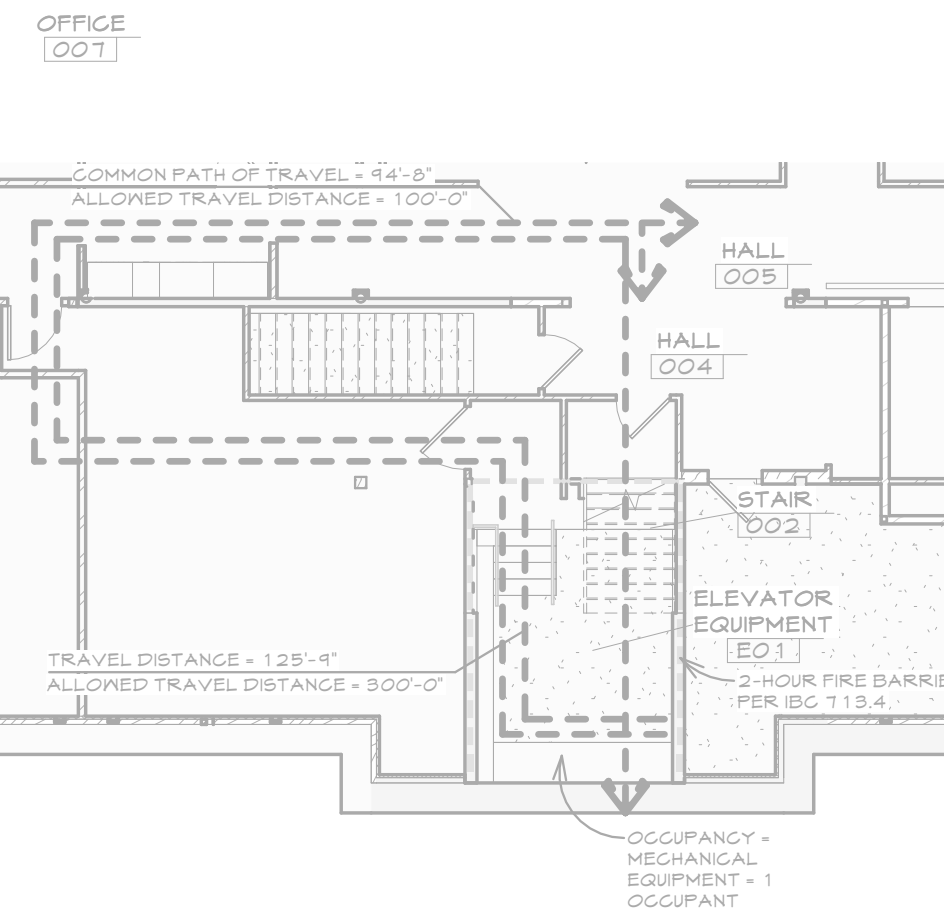
PREVIOUS PHASE 1 REMODEL
SUB-BASEMENT CODE PLAN

SCALE: 3/32" = 1'-0"



2015 IEBC CODE - BASEMENT

OCCUPANCY: B (BUSINESS)
GROSS SQUARE FOOT: 2,836 SQFT
TOTAL OCCUPANT LOAD OF FLOOR: 11 OCCUPANTS
TOTAL EGRESS WIDTH REQUIRED (SPRINKLERED) - 6'4"
TWO EXITS PROVIDED WITH 12" OR 6'-0" EXIT WIDTH

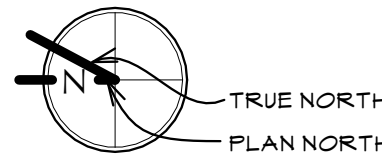


2024 IEBC CODE - BASEMENT
PHASE 2

OCCUPANCY: B (BUSINESS)
GROSS SQUARE FOOT: 5,206 SQFT (ENTIRE BASEMENT FLOOR)
2,836 GROSS SQUARE FEET OF BASEMENT FLOOR REMODEL AREA
TOTAL OCCUPANT LOAD OF BASEMENT FLOOR: 17 OCCUPANTS
TOTAL EGRESS WIDTH REQUIRED (SPRINKLERED) - 6'4"
TWO EXITS PROVIDED WITH 12" OR 6'-0" EXIT WIDTH

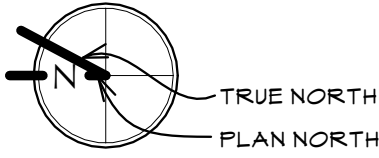
PREVIOUS PHASE 1 REMODEL
BASEMENT CODE PLAN

SCALE: 3/32" = 1'-0"



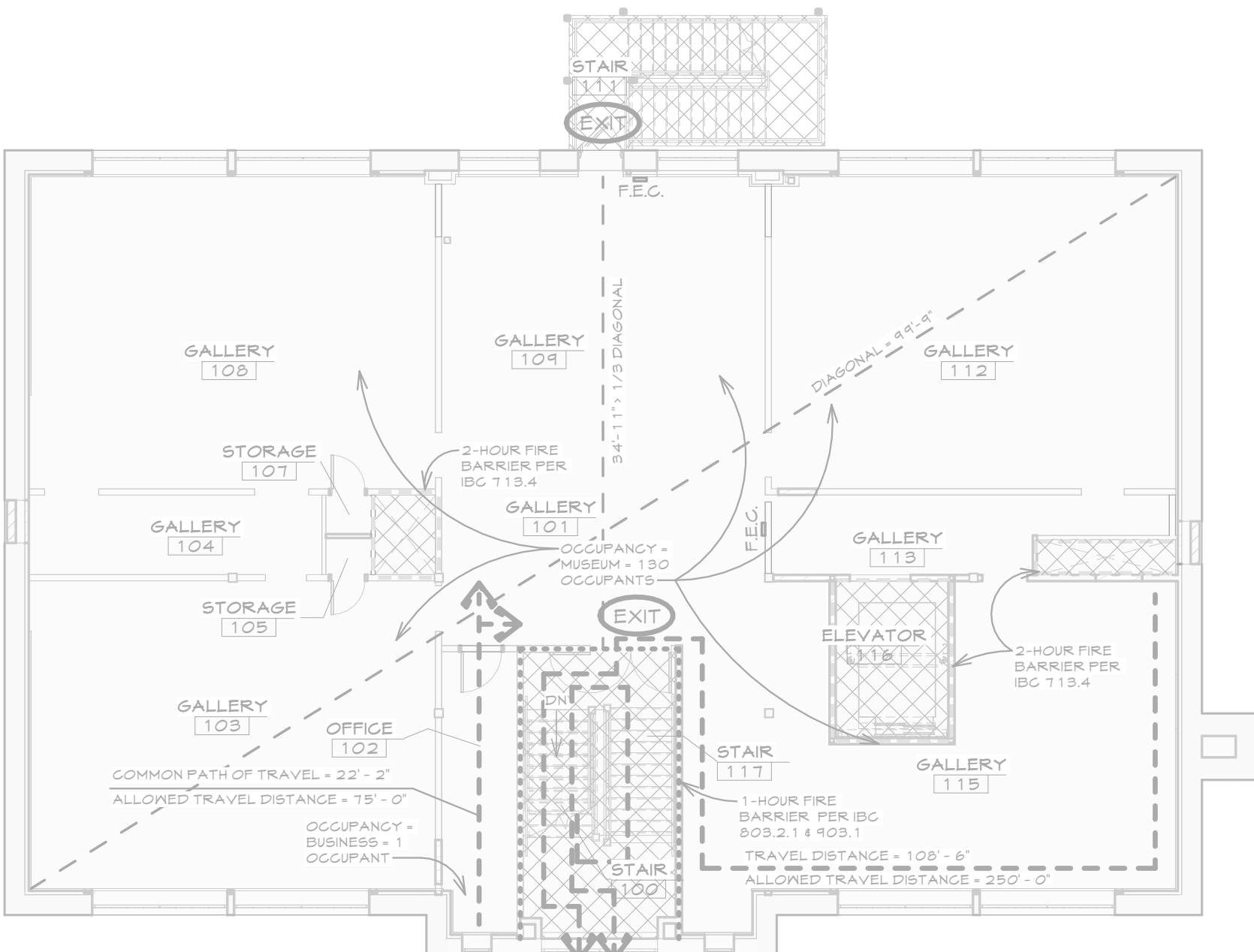
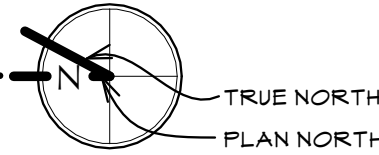
PREVIOUS PHASE 1 REMODEL
EQUIPMENT ROOM CODE PLAN

SCALE: 3/32" = 1'-0"



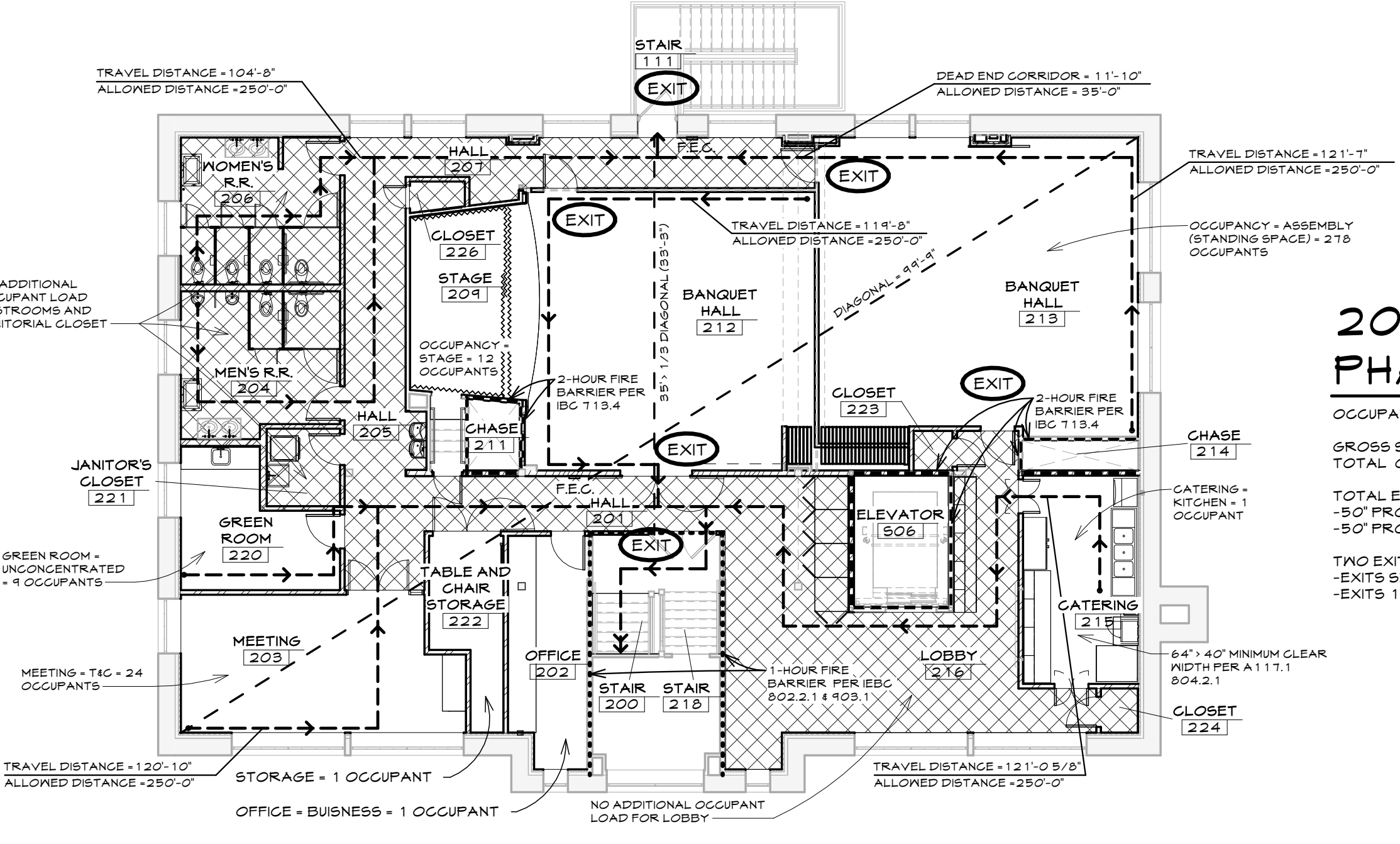
PHASE 2 REMODEL BASEMENT
CODE PLAN

SCALE: 3/32" = 1'-0"



2015 IEBC CODE - FIRST FLOOR

OCCUPANCY: A3 (ASSEMBLY - MUSEUM)
TOTAL OCCUPANT LOAD OF FLOOR: 131 OCCUPANTS
TOTAL EGRESS WIDTH REQUIRED (SPRINKLERED) - 26'
- 50' PROVIDED AT EXISTING MAIN STAIR, AND
- 50' PROVIDED AT NEW EXTERIOR EXIT STAIR
TWO EXITS REQUIRED DUE TO OCCUPANT LOAD - 500 OCCUPANTS - IBC TABLE 1006.3.1
- EXITS SEPARATED BY 1/3 DIAGONAL - YES PER IBC 1001.1.1, EXCEPTION 2
- EXITS 1/3 DIAGONAL (SPRINKLERED) - O.K. (NECESSITATES SPRINKLER REQUIREMENT)

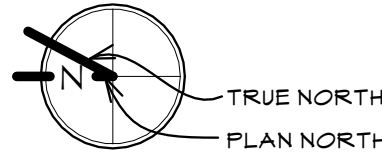


2024 IEBC CODE - SECOND FLOOR
PHASE 2

OCCUPANCY: A3 (ASSEMBLY - COMMUNITY/DANCE HALL)
GROSS SQUARE FOOT: 5,111 SQFT (ENTIRE SECOND FLOOR ONLY)
TOTAL OCCUPANT LOAD OF FLOOR: 326 OCCUPANTS
TOTAL EGRESS WIDTH (SPRINKLERED) - 66" OR 5'-6"
- 50' PROVIDED AT EXISTING MAIN STAIR, AND
- 50' PROVIDED AT EXISTING EXTERIOR EXIT STAIR
TWO EXITS REQUIRED DUE TO OCCUPANT LOAD - 500 OCCUPANTS - IBC TABLE 1006.3.1
- EXITS SEPARATED BY 1/3 DIAGONAL - YES PER IBC 1001.1.1, EXCEPTION 2
- EXITS 1/3 DIAGONAL (SPRINKLERED) - O.K. (NECESSITATES SPRINKLER REQUIREMENT)

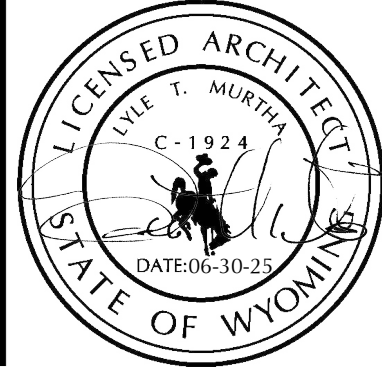
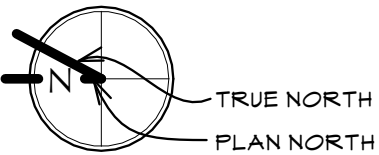
PREVIOUS PHASE 1 REMODEL FIRST
FLOOR CODE PLAN

SCALE: 3/32" = 1'-0"

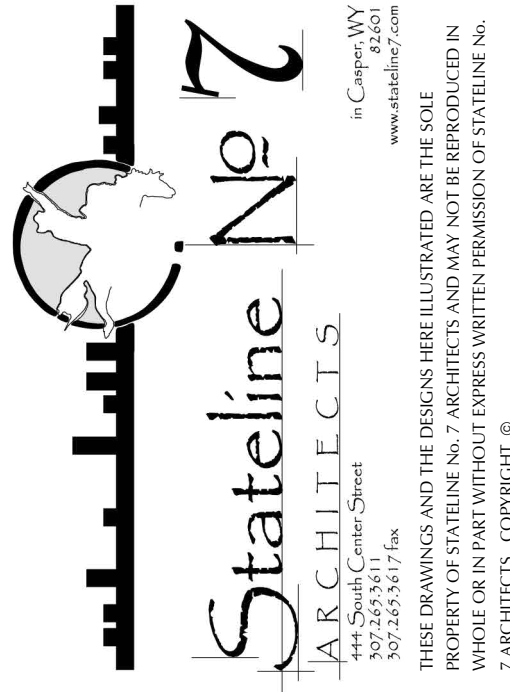


PHASE 2 REMODEL SECOND FLOOR
CODE PLAN

SCALE: 3/32" = 1'-0"



OLD STONEY REMODEL
PHASE TWO
120 NORTH 4TH STREET
SUNDANCE, WYOMING 82729



PROJECT NUMBER
16-022

DATE
06-30-25

DRAWN BY
CB

DISK ID.

SHEET TITLE
CODE PLANS AND
SUMMARY

SHEET NUMBER

0.10